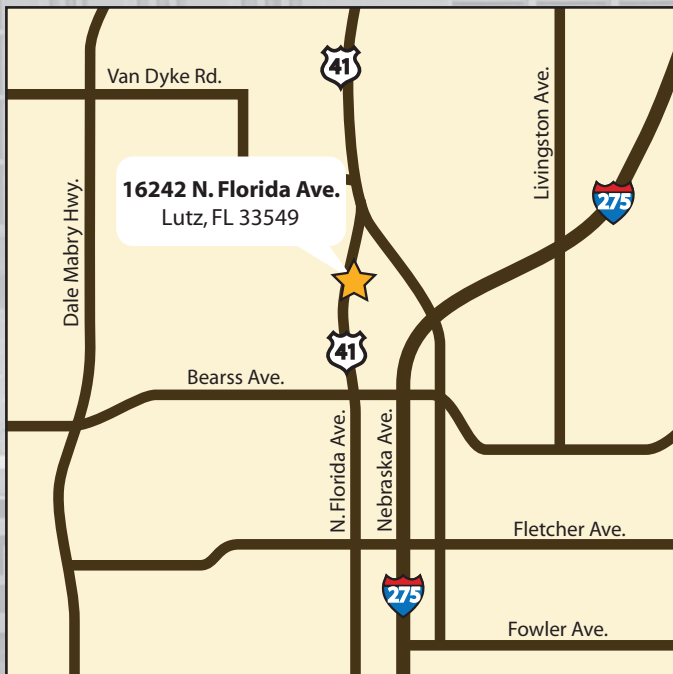


16242 N. Florida Avenue

Lutz, FL 33549

Office Building Available for Sale or Lease



17,000 Square Foot Office Building Available For Sale or Lease

- 17,000 Square Feet includes a 6,400 square foot warehouse with dock high and grade level access
- Single Tenant Building - Sub-divisible
- 1.79 Acres MOL
- One half mile from I-275 at Bearss Avenue
- Prominent signage on N. Florida Avenue
- Minutes from Pasco County
- Tastefully designed reception/lobby entrance

For Additional Information Please
Contact Hans Kaunath:
(813) 908-1727

Email: hkaunath@ciminelliflorida.com

Ciminelli
REAL ESTATE SERVICES OF FLORIDA

3928 Premier North Drive
Tampa, FL 33618

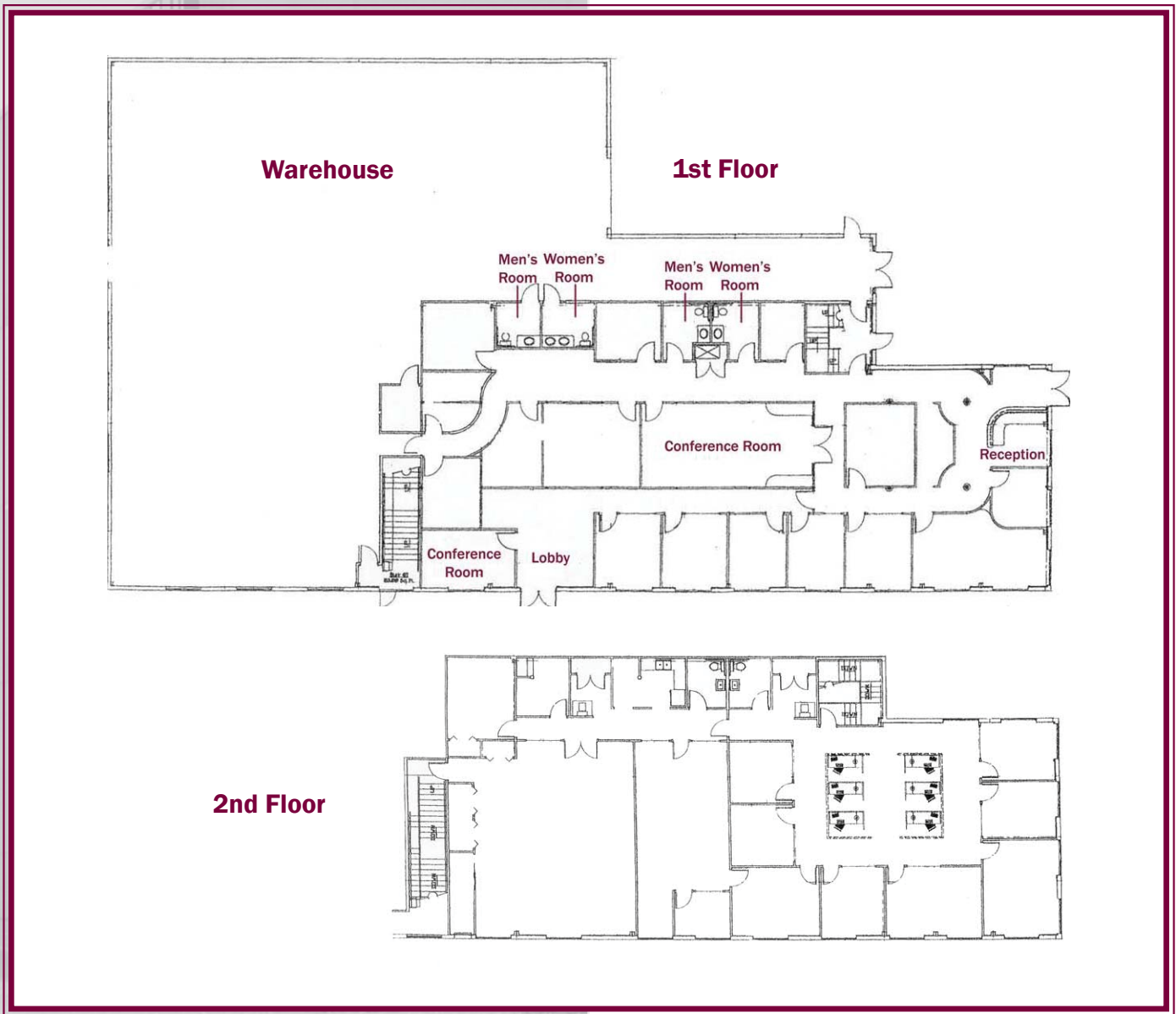
Ph: (813) 908-1727 • Fax: (813) 908-5518

www.ciminelliflorida.com

Licensed Real Estate Broker

16242 N. Florida Avenue

16,800 Square Foot Office Building Available for Sale or Lease



For Additional Information Please
Contact Hans Kaunath:
(813) 908-1727

Email: hkaunath@ciminelliflorida.com

Ciminelli
REAL ESTATE SERVICES OF FLORIDA

3928 Premier North Drive
Tampa, FL 33618

Ph: (813) 908-1727 • Fax: (813) 908-5518

www.ciminelliflorida.com

Licensed Real Estate Broker