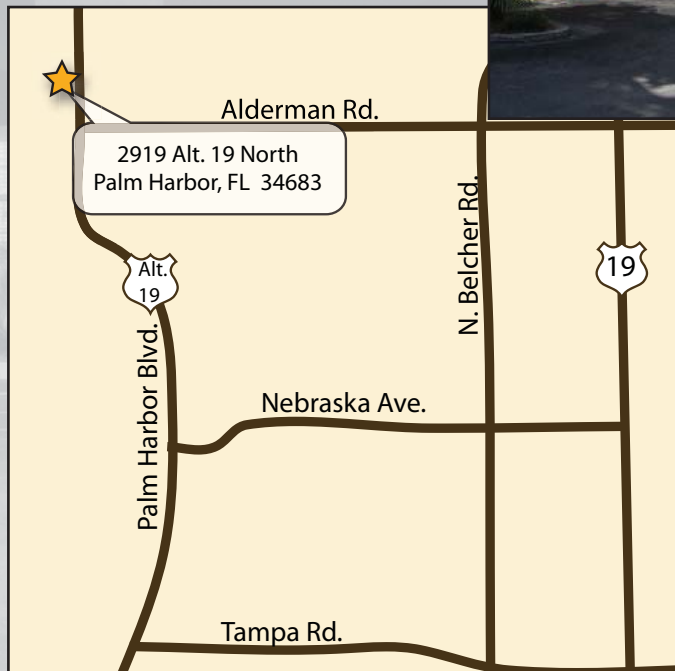


2919 Alternate 19 North

Palm Harbor, FL 34683

Office / Medical Space For Lease

*Conveniently located
near hospitals,
physicians, schools,
retail and recreation.*



- 2,373 square feet available
- Medical and professional office suites
- Attractive Mediterranean-styled architecture
- Great location and exposure
- Monument signage available
- Excellent parking 6:1,000

For Additional Information
Please Contact Judy Healey:

(727) 456-5774

Cell: (813) 299 - 5883

Email: jhealey@ciminelliflorida.com

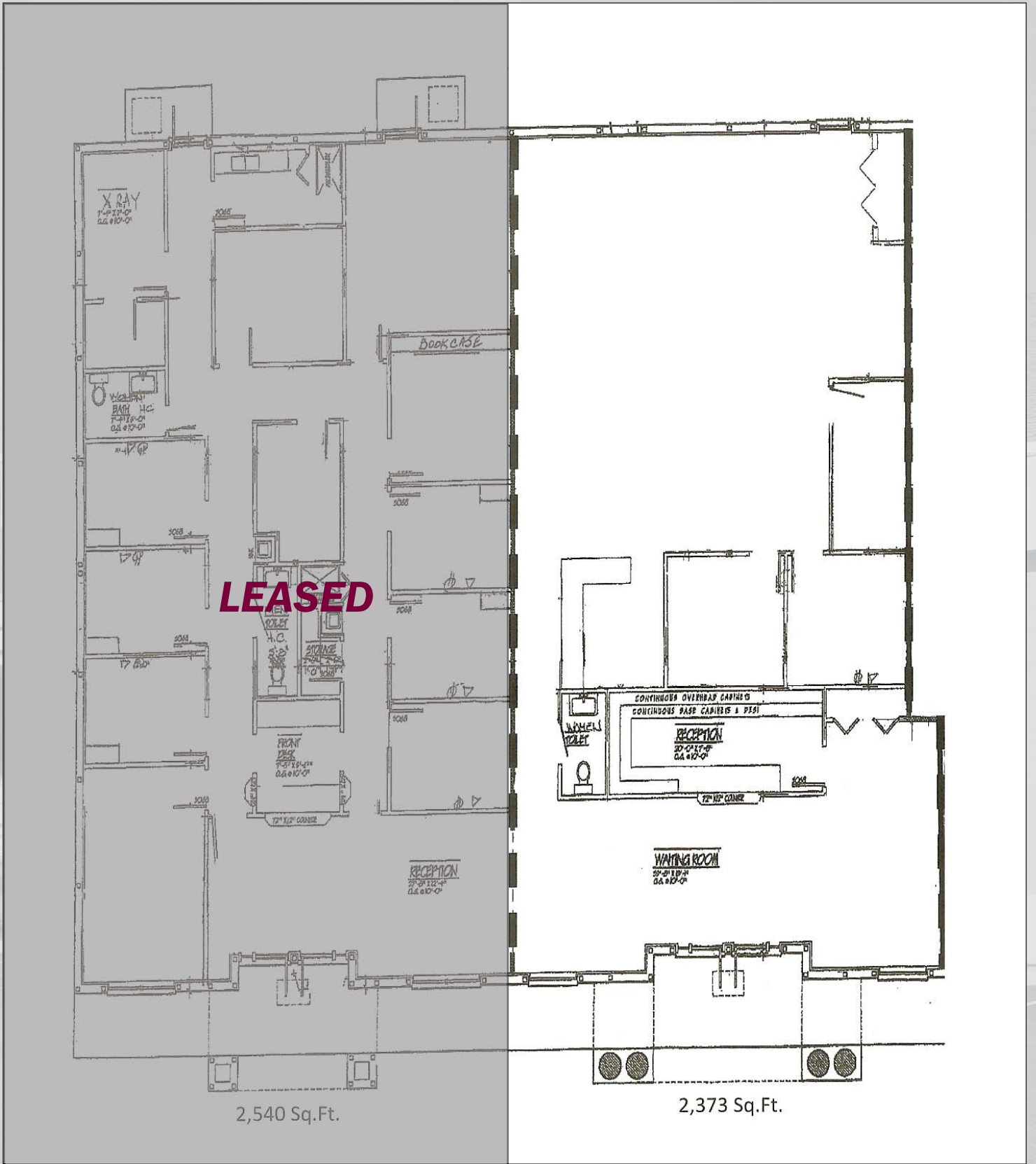


3928 Premier North Drive
Tampa, FL 33618

Ph: (813) 908-1727 • Fax: (813) 908-5518

www.ciminelliflorida.com

Licensed Real Estate Broker



**2,373 Square Feet
Available**